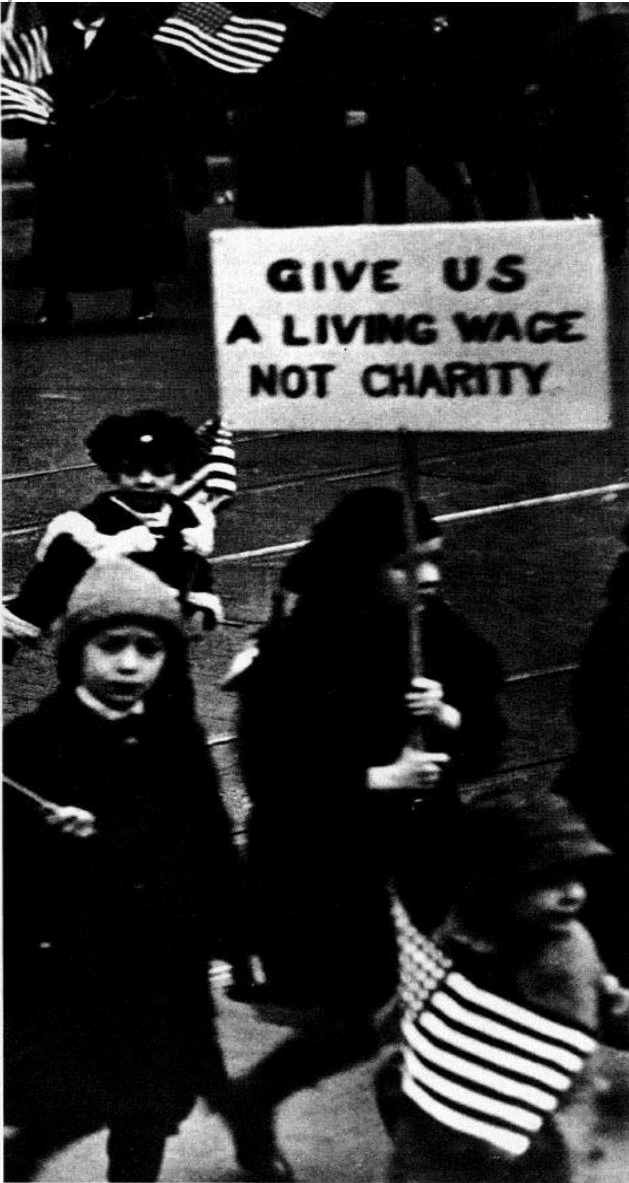


1912

March: Workers in Lawrence strike and win higher wages.

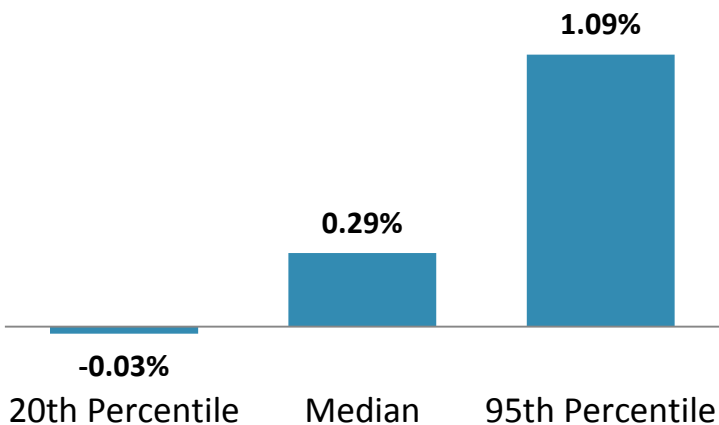
June: Massachusetts enacts the first minimum wage law in the U.S.



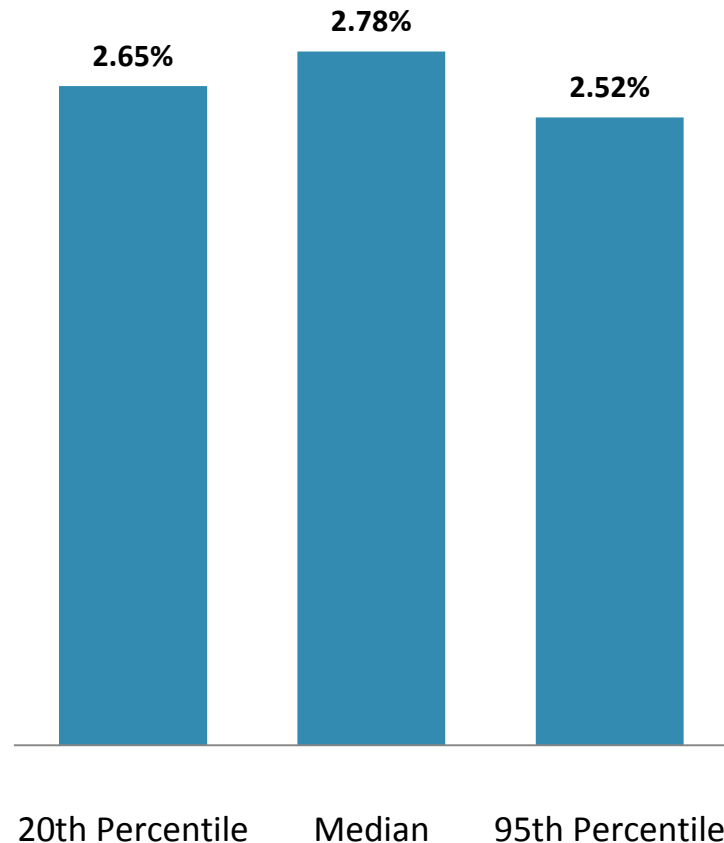
Since 1973: Unbalanced Economy; Weak Growth

Early Postwar Years: Shared Prosperity

1973-2011



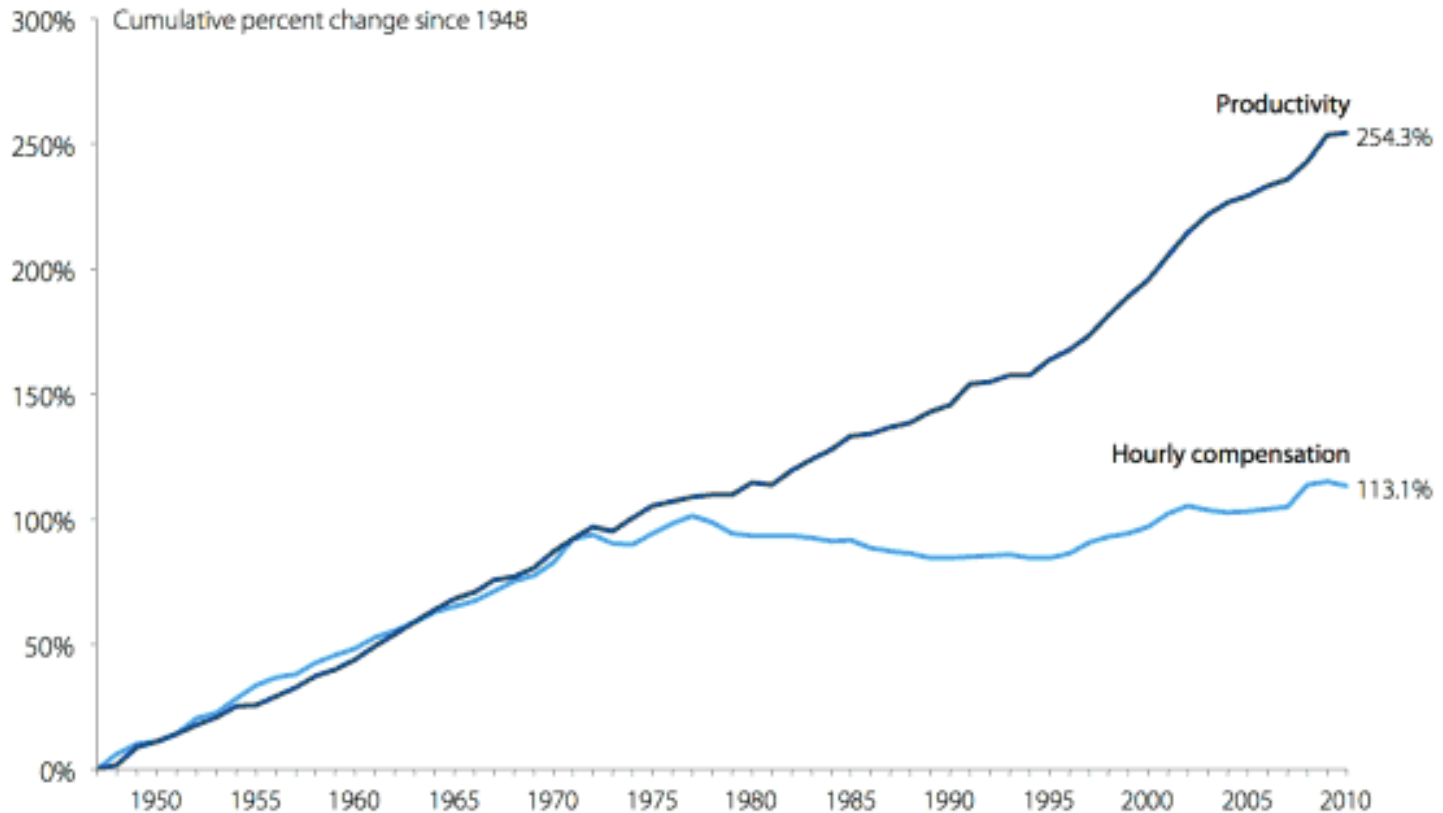
1947-1973



Annual change in real family income, adjusted for inflation, FY 2011 \$

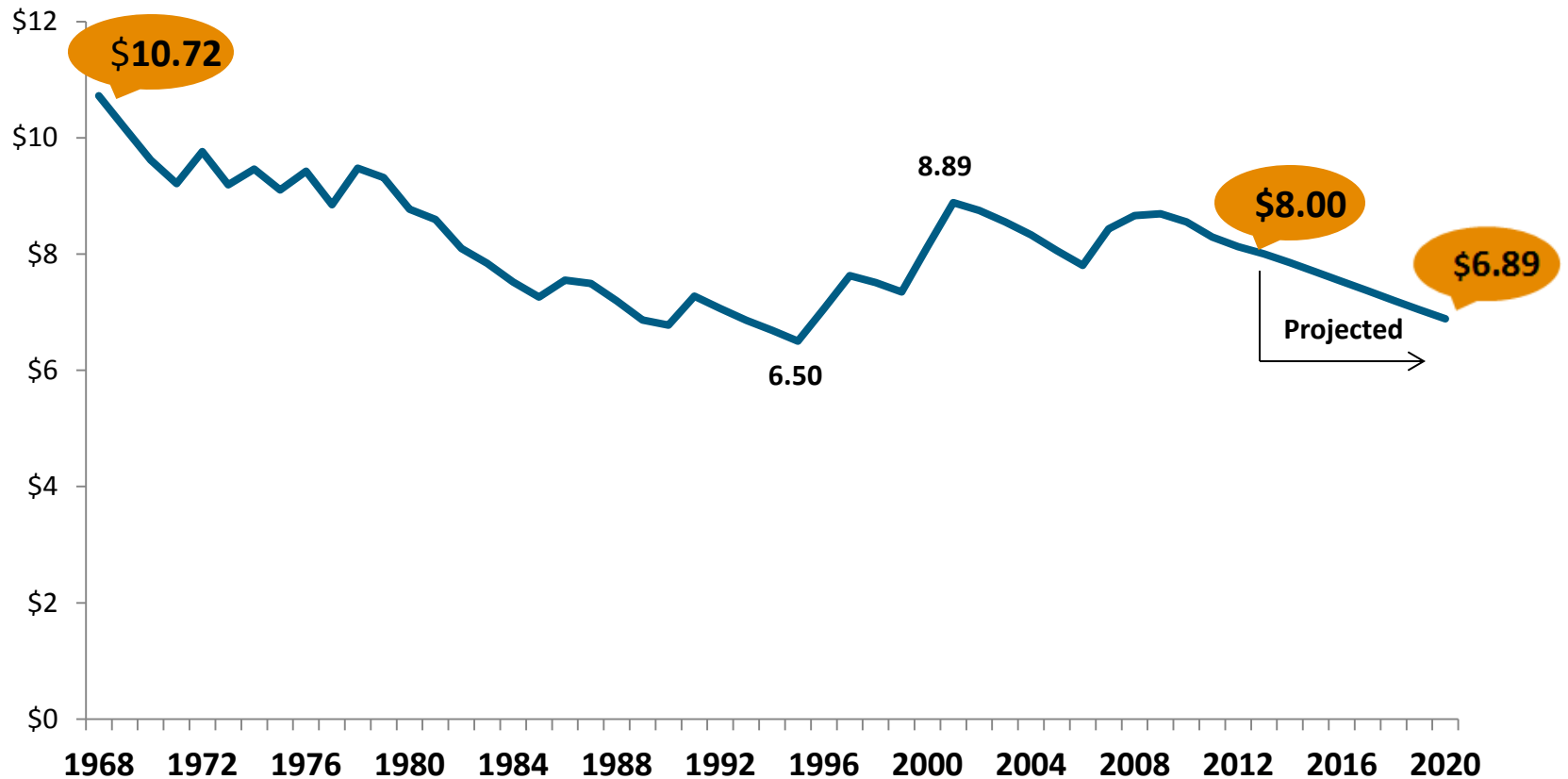
Productivity Has Risen in US, But Wages Have Not Kept Pace

Growth of real hourly compensation for production/nonsupervisory workers and productivity, 1948–2011



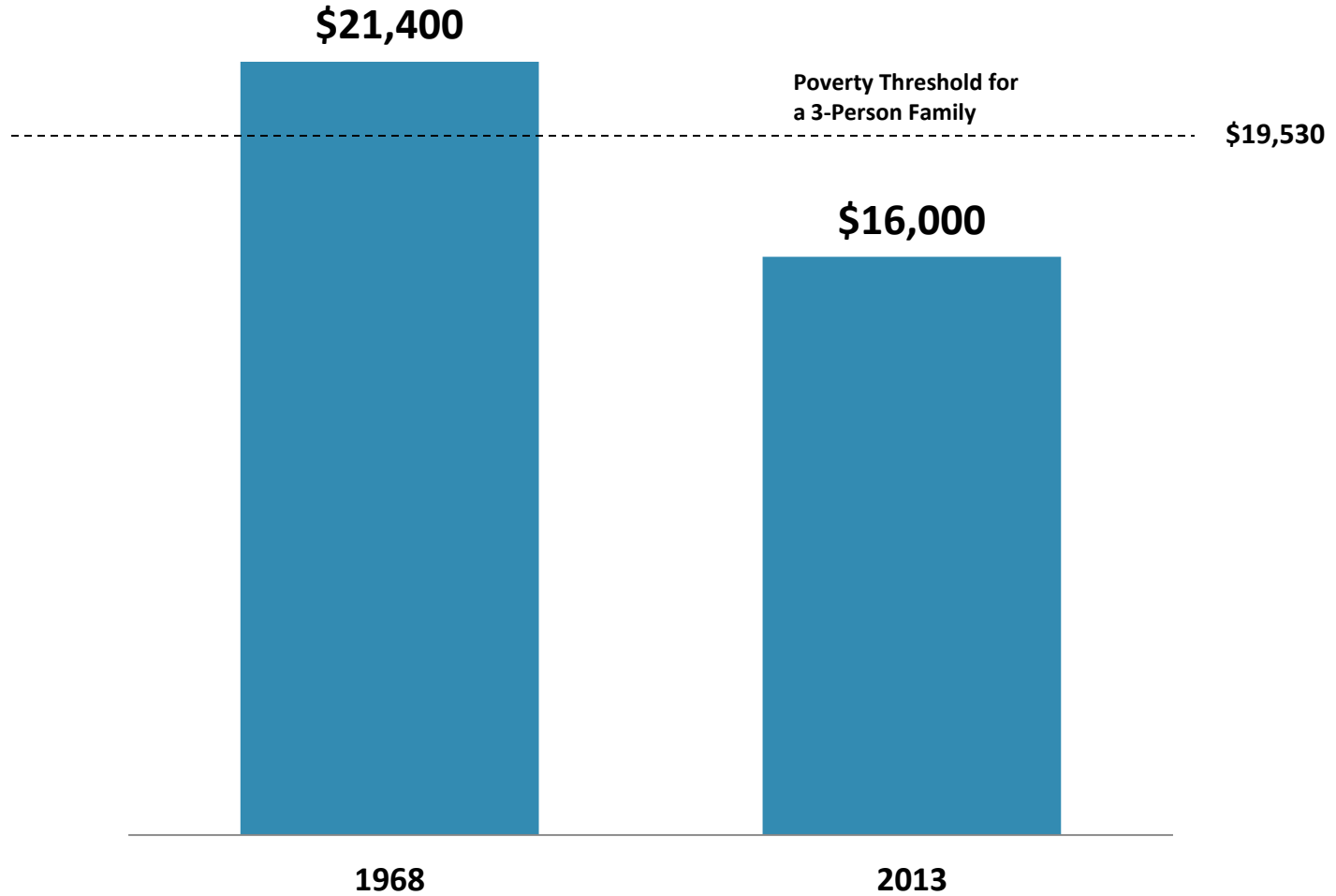
Source: EPI analysis of State of Working America, updated September 2013

The Real Value of the Minimum Wage Has Dropped 25 Percent Since 1968



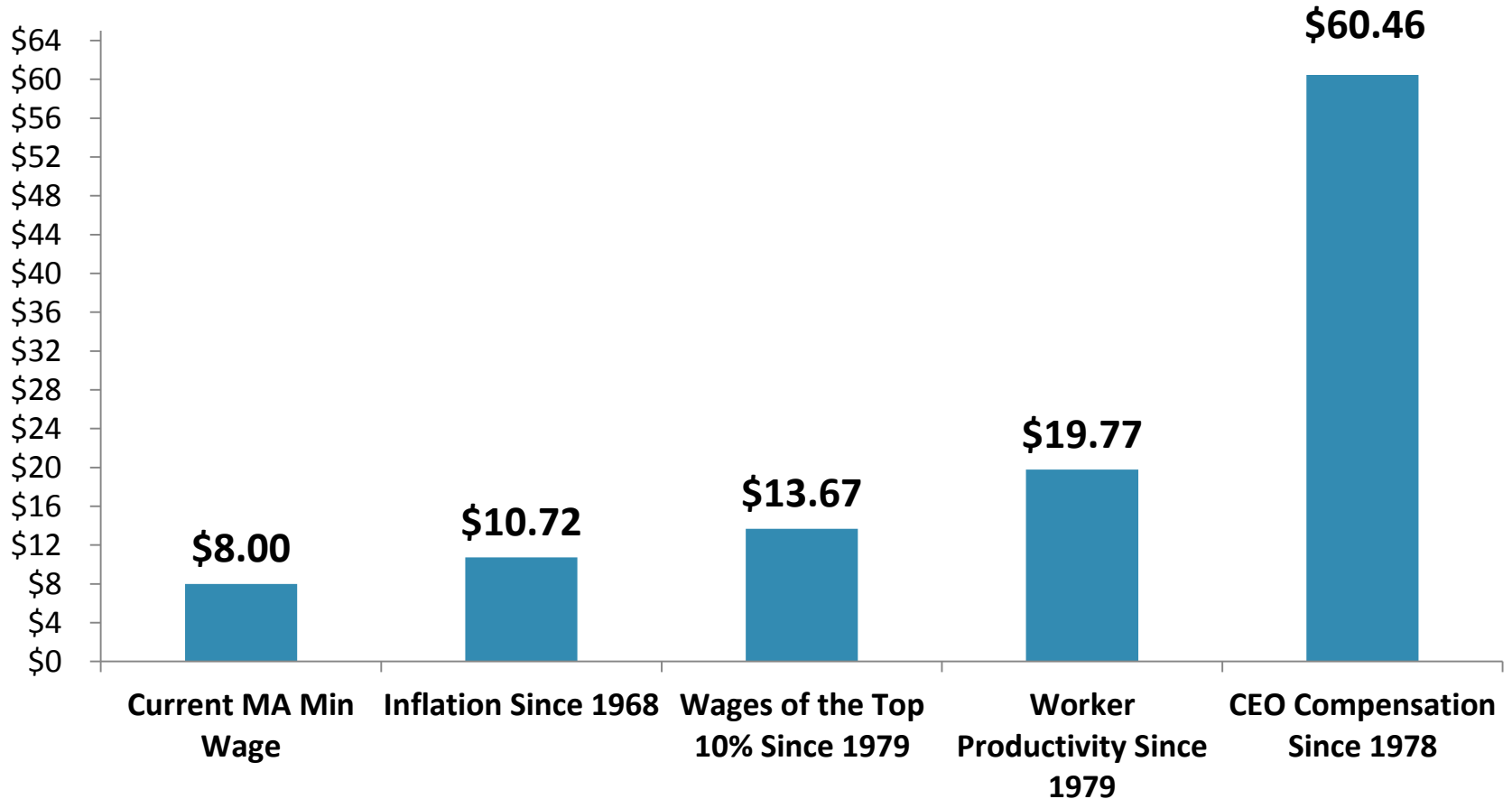
Today, Full-Time Min. Wage Workers Earn \$5,400 Less Per Year

Annual earnings for full-time minimum wage worker in Massachusetts, adjusted for inflation, FY 2013 \$



Wage Inequality Has Grown in Recent Decades

Projected 2012 Minimum Wage Using Selected Indices



No Evidence that Minimum Wage Levels Have Affected State Recovery from Recession

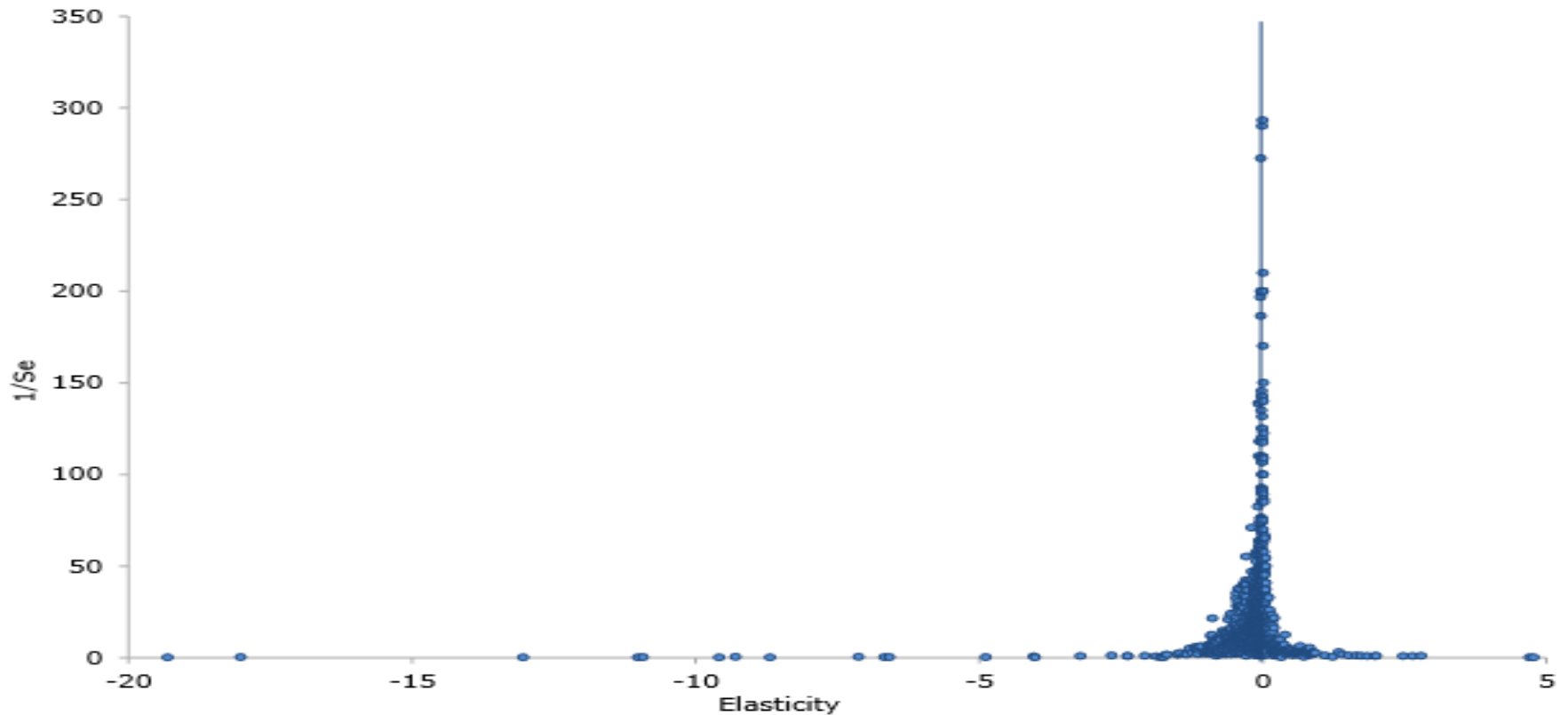
Change in non-farm employment, ranked by state minimum wage level,
June 2009-June 2012



Source: EPI analysis of Bureau of Labor Statistics data; Department of Labor data on minimum wage levels; state minimum wage as of January, 2012.

The Minimum Wage Has No Discernible Effect on Employment.

Trimmed Funnel Graph of Estimated Minimum – Wage Effects on Jobs



Source: Doucouliagos and Stanley (2009).

An Increase to \$10 Will Affect One in Five MA Workers

Over Half a Million Workers

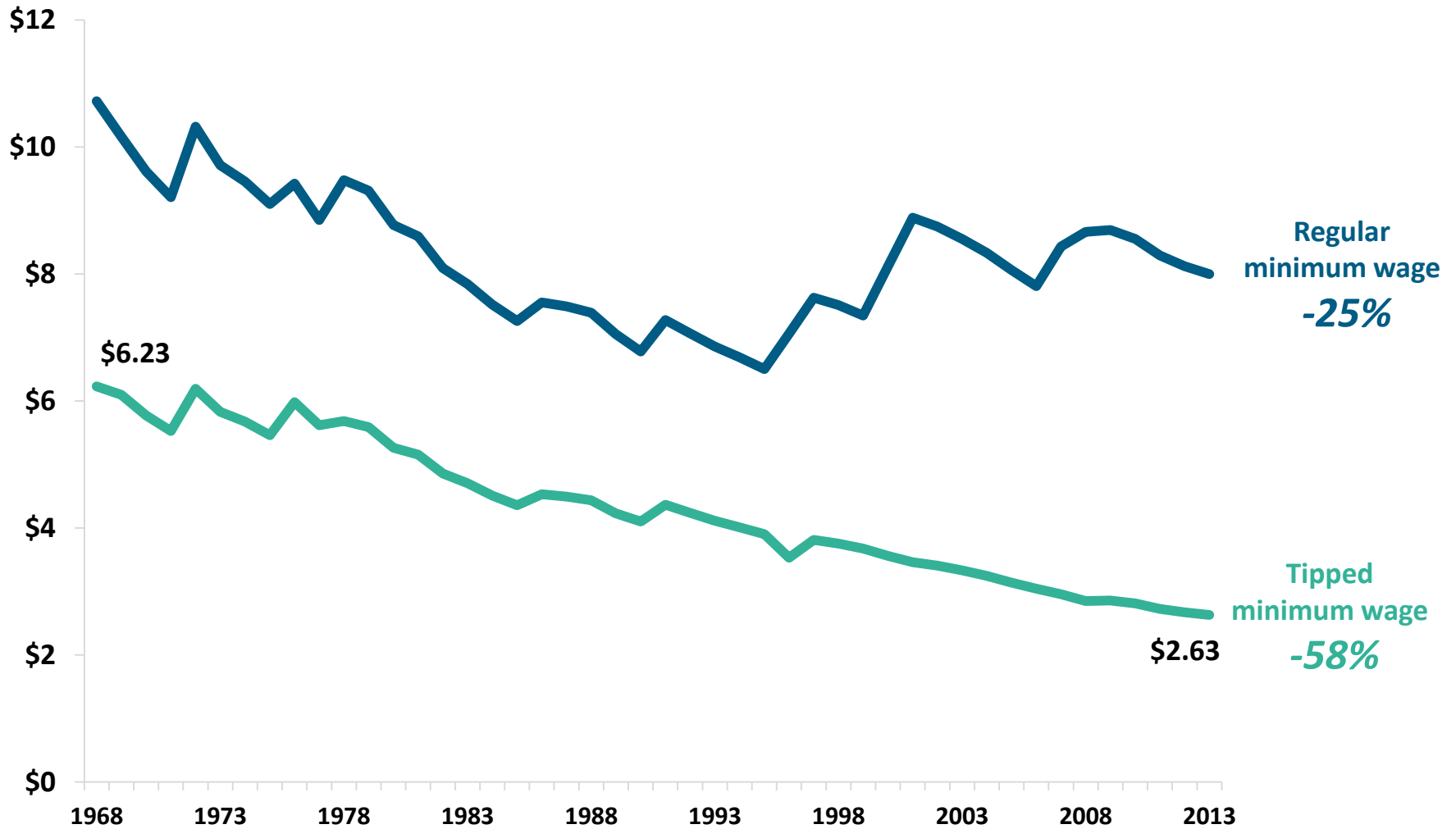


One in Four Workers Who Will Receive a Pay Increase Has Children



- About 236,000 children have a parent who will be affected by a minimum wage increase.
- About 46,000 children affected by a minimum wage increase live in households below the poverty threshold.
- 86% of workers affected by a minimum wage increase are older than age 20.

Tipped Minimum Wage Has Fallen Even More



Source: U.S. Department of Labor. Real value using the Consumer Price Index for all Urban Consumers (CPI-U); 2013 estimates based on Congressional Budget Office estimates